

2007
A year in review
From the Foundation



Four County

community foundationSM

Connecting Lapeer, Macomb,
Oakland & St. Clair Counties



Four County

community foundation

From the Chairman.....	1
Board of Trustees Officers.....	1
Legacy Society.....	2
Advisor's Circle.....	2
Youth Advisor Committee.....	2
Emeritus Board.....	2
Staff.....	2
Board of Trustees.....	3
FCCF Funds.....	4
Financial Statement.....	5
New Funds	6
Community Grants.....	7
Mission Statement.....	10

From the Chairman

For good—for ever is a motto which
Four County Community Foundation

is committed to as we celebrate our 20th anniversary of service. Our communities have benefited, thanks to the participation of thousands of people. I want to thank everyone who has supported our communities through your generous donations and your volunteer service. Your efforts have resulted in the awarding of 3,225 grants which make our area a better place to live, work and visit.

Our community foundation's history began with the creation of the Community Hospital, established in 1953. It was a successful operation for over 20 years. By the 1980s, larger, newer hospitals with extensive equipment and services beyond the means of a smaller facility resulted in a decline of patients. In 1987, St. Joseph's Mercy Hospital of Macomb purchased the hospital for \$2,500,000.

The local board determined that the proceeds should create the first endowment fund for a community foundation. Hundreds of donors have contributed to the Four County Community Fund which is our largest fund. It awards grants quarterly in areas such as health care, education, senior services, parks and recreation, emergency services, public safety and historic preservation. This fund allows flexibility in providing grants which address the emerging needs and priorities in our area.

Many individuals, families and organizations have created endowment funds at the foundation. Our ability to customize a fund to meet a donor's charitable goals has resulted in over 90 funds being established. Since 1987, our assets have grown to over \$10,600,000. During that same time, grants have been awarded in excess of \$4,700,000.

The downturn in the local economy has resulted in more requests from our emergency services organizations. At the same time, donations have decreased for many agencies that provide food, clothing, shelter, health services, counseling, money management and assistance in finding and keeping a job. During 2007, the foundation's Four County Community Fund and some donor advised funds have awarded grants to Samaritan House, McRest (Macomb County Rotating Emergency Shelter Team), Love Inc. of Lapeer County, Loving Hands Health Clinic and Turning Point, Inc. We are continuing to experience increases in emergency service fund requests in 2008 and anticipate that 2009 will again be a difficult year for service providers.

The creation of an annual publication featuring festivals and fairs, orchards, farm markets, parks and other treasures was an initiative which the board started in 2007. We have received positive feedback from the public for the promotion of local places that make our communities unique and special. Our encouragement to "buy local" has resulted in more networking of our local farmers, orchards and farmer's markets. We provide the information in print and web-based formats to reach the largest audience possible. Check it out at our website: www.4ccf.org.

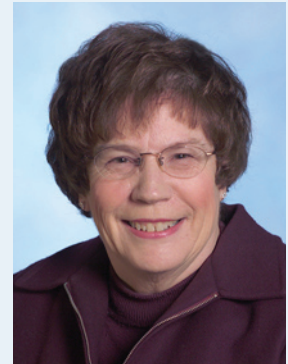
As we enter our third decade of service, we encourage you to take an active role in Four County Community Foundation. You can play a role in making a difference in our area. Help us to respect our past, celebrate our present and shape our future.

Joseph Salas,
Chairman



Joseph Salas, Chairman

Board of Trustees Officers



*Barb Quain
Vice-Chairman*



*Kim Jorgensen
Secretary*



*Al Verlinde
Treasurer*

Legacy Society Members

We gratefully recognize those who ensure a legacy to the Foundation by means of deferred gifts. These people are an encouragement to others in the community to design their legacy by remembering Four County Community Foundation in their charitable plans.

Janet Bauer	Ella Mae & Gertrude Murdie
John & Connie Brzozowski	Catherine & Dorothy Ondersma
Marion & Robert Fischer	Dr. James & Ann Sillers
Paul & Elsie Hinzmann	Bernard Stremler, M.D.

Advisor's Circle

We want to recognize the professional advisors who have worked with their clients to establish major gifts for the Foundation. Their work is indispensable. The number following their name indicates the number of gifts they have brought to Four County Community Foundation.

Our sincere gratitude to:

Shane Diehl	Henry Malburg, 2
Sebastian V. Grassi	Sean O'Bryan
Cynthia Lane	Barb Quain
Ed Lynch, 3	Ronald W. Rickard, 2

Youth Advisory Committee

Shelby Couch, President
Jason Feys, Vice-Pres.
Taylor Sinda, Treasurer
Jamie Ligon, Secretary
Shelby Zegler, Historian

Brandon Beaupre	Jon Lafata
Beth Bodiya	Ashley Mousseau
John Eschenburg	Tyler Nichols
Charlotto Ezzo	Nick Nivision
Tyler Glombowski	Jordan Peters
Mark Gonzar	Alexandria Reinhardt
Wes Jonik	Stephanie Walla
Emily Kramek	Shelby Zegler

YAC Advisors

Janet Bauer	Kim Jorgensen
Marianne Engstrom	Gary Richards
Kim Fleming	Laura Schapman

Emeritus Board

David S. Bishop
John Bishop
Patricia Brozowski
Judy Czerepowicz
Donald Davenport
Shane Diehl
Kathleen Eubank
Hal Hooks
James Ligon, Jr.
Brenda Pinskey
Edmund Risch
Jim Sillers
Barbara Stremler

Staff

Janet Bauer, President/CEO
Susan Gainer, Admin. Asst./Accountant
Valerie Quinn, Program Associate
Christine Gabridge, retired

Board
of
Trustees



William Duggan



*Katherine
Eschenburg*



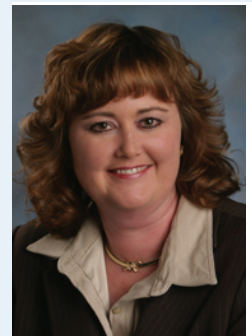
Henry Malburg



Hank Nichols



Sean O'Bryan



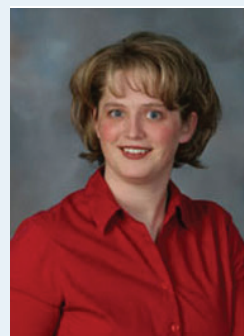
*Jennifer
Parker-Moore*



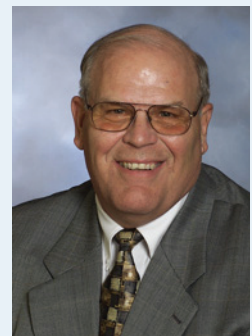
Nancy Parmenter



Gary Richards



Laura Schapman



*Charles
Scheidegger*



☞ Denotes New Funds

Unrestricted

Four County Community

Administrative

Friends Operations

Operating

Capital Campaign & Non-Endowed Funds

Capac Adolescents Preventing Abuse & Crime

☞ **Capac Youth Sports Project**

President's Advised

Sillers Family Charitable

Designated Agency

Family Literacy Center of Lapeer County

Roland W. Graubner Endowment Fund for the Romeo Library

Imlay City Historical Commission

North Macomb Soccer Club Field Development

Romeo Historical Society/Charles E. Keller

Symphonia Chorale Endowment

Donor Advised

Almont Education & Community

Armada Educational Foundation

Justin C. "Jut" Bullock Memorial

Capac Educational Endowment

Darin Conrad Education

Joseph & Bertha Corrion Charitable

Imlay Area Christian Community

Ligon Brothers

Marshall Lock Memorial

James E. Neely

Rhonda Nugent Memorial

Ottevaere Safe Horsemanship Program

Karras Pelfrey Memorial

Richmond Athletic Club Endowment

Gail Rickard Foundation

Romeo Community Action

Dr. Bernard J. Stremmer Memorial

Harold Tietz Memorial Fund for Cancer

Waterloo Hunt Club Donor Advised

Woods-N-Water News Outdoor Foundation

Field of Interest

21st Century Education

Almont Area

Armada Area

Capac Area

Dryden Area

Imlay City

Romeo Area

FCCF Home

Four County Environmental

Healthy Seniors/Healthy Youth

Imlay City Educational Endowment

W. K. Kellogg Youth

Lapeer Regional Hospital

Lloyd Veitch

Loral Watson Memorial Endowment

Scholarship

Nancy B. Barr Adult Education

John R. & Iris M. Bartholomew

Andy Beam Memorial

Capac Athletic Booster

Capac Educational

Harry Bussell

Marion & Robert Fischer

Robert Wayne Creger Sr. Memorial

Cryderman-Hebblewhite Agriculture

Gualdoni Family Education

Hilda M. Hill Memorial

Imlay City Educational

Grettenberger

Alvin Norlin

Glenn L. Smith II

Lee Weyer Athletic

Richard P. Wheeler

Imlay City Schools Alumni Association

Ruth Isaacson Memorial

Lawrence & Rose Juip Memorial

Knights of Columbus Council #7018 Roman Catholic

Laurie Lee Memorial

Russell W. Ligon Memorial Engineering

William & Betty Morrison Memorial

Murdie Educational

North Macomb Soccer Club

Romeo Community Schools

American Legion

Dan Barnabo

David Brockman

Ralph Dietz

Steven Fritz Sr.

Ellis C. Haskell

Haskell Trust

Al Moran

Eldon Mueller Memorial

David L. Olson/Rotary

Romeo Boosters Club

Sisson

Starkweather/Garvin

George S. Souten Performing Arts

Vera Souten Medical Field

St. Clement Church & K of C #7018 College

Jean Currey Stanwood Memorial

☞ **Brian Verstrete Memorial**

Floyd W. West Memorial

Xi Gamma Rho of Beta Sigma Phi

Financial Statement

Statement of Activities and Changes in Net Assets

	Year Ended	
	December 31, 2007	December 31, 2006
Revenue, Gains and Other Support		
Contributions – Unrestricted	\$ 124,525	\$ 118,451
Interest Income – Unrestricted	275,103	268,219
Net realized and unrealized gains and losses	405,688	1,023,613
Special event revenue	<u>---</u>	<u>24,390</u>
Total revenue, gains and other support	805,316	1,434,673
Expenses		
Program services – Grants and contributions	459,413	361,309
Support services:		
Management and general	133,014	128,477
Fund-raising	16,267	26,096
Development	<u>34,601</u>	<u>33,813</u>
Total expenses	<u>643,295</u>	<u>549,695</u>
Increase in Net Assets	162,021	884,978
Net Assets – Beginning of year, as restated	<u>10,408,538</u>	<u>9,523,560</u>
Net Assets – End of year	<u>\$ 10,570,559</u>	<u>\$ 10,408,538</u>

Statement of Financial Position

	December 31, 2007	December 31, 2006
Assets		
Cash and cash equivalents	\$ 194,370	\$ 195,479
Investments	10,242,976	10,055,115
Accrued interest receivable	5,448	8,104
Property and equipment	<u>170,247</u>	<u>174,351</u>
Total assets	<u>\$ 10,613,041</u>	<u>\$ 10,433,049</u>
Liabilities and Net Assets		
Liabilities		
Grants payable	\$ 39,757	\$ 21,062
Other liabilities	<u>2,725</u>	<u>3,449</u>
Total liabilities	42,482	24,511
Net Assets – Unrestricted	<u>10,570,559</u>	<u>10,408,538</u>
Total liabilities and net assets	<u>\$ 10,613,041</u>	<u>\$ 10,433,049</u>

PUBLIC NOTICE: Our annual audit and IRS 990 are on file for review at the Foundation office during normal business hours. Copies of either document are available for a nominal fee. Names of investment managers, fees charges, and names of Four County Community trustees responsible for investment and oversight of assets are available upon request.

New Funds

Brian Verstrete Memorial Scholarship

Thanksgiving for a nurturing hometown and a desire to memorialize a dear friend lead to the creation of the Brian Verstrete Memorial Scholarship.

Brian grew up in the Holly area, and moved to the Imlay City area to live in the home of an aunt and uncle. During high school he wore the Spartan's football uniform and developed a very close friendship with a large circle of friends. The 1990 graduate joined the U.S. Marine Corps. and proudly served his country for four years, spending time in both the Philippines and Hawaii. Upon returning home, he met and married the love of his life, Kinga. The couple welcomed two sons into their family, Alexander and Eugene.



Established by his classmates on February 13, 2007, the one-year anniversary of Brian passing from inoperable cancer, the endowed scholarship will provide an annual award to a graduating Imlay City High School senior.

*Brian
Verstrete*

Capac Youth Sports Project Fund

The Capac Youth Sports Project began seven years ago as a joint agreement between Mussey Township, the Village of Capac, and Capac Community Schools to provide playing fields for young people in the area. The school District purchased 37 acres of property adjacent to its elementary school for the complex.



The fund at Four County Community Foundation has been instrumental in providing a solid foundation for fund raising. The Foundation has also provided a grant from its Capac Adolescents Preventing Abuse and Crime fund for field improvements.

Community support comes from local businesses, corporations, the county's recreational tax fund, the Village of Capac and the Townships of Mussey, Lynn, and Emmett. Many community volunteers picked rocks, raked, graded, put up fences, and built the playing fields from the ground up. In addition, there have been donations of materials and equipment. Currently, the soccer and tee-ball fields are in use and the baseball fields are under construction. As the Community Youth Sports Complex grows it will leave a long-lasting impact on the Capac Community.



Health & Emergency Services

Year's end saw a marked increase in basic human support, health and emergency needs. It was probably one of the first indicators of the year to follow. Applications increased for human services and both FCCF and donor advised funds supported many.

Samaritan House provided Emergency Food to 5,476 people in 2007, an increase of five percent over 2006. Shelter assistance increased by 10 percent (134 individuals), and medical service was provided for 627 patients. Samaritan House volunteers logged more than 7,000 hours.

Low income and the underinsured plagued by chronic illness are eligible for assistance through Loving Hands Clinic. Patients are treated for diabetes, hypertension, asthma and other serious primary-care illnesses, as well as dental services. Necessary medications are provided along with medical education. Loving Hands operates under a full-time Clinic Administrator and an extensive volunteer network of doctors and nurses. In 2007, the clinic treated an average of 52 clients monthly. FCCF, supported medications, diagnostic testing, insulin and diabetic testing supplies, and medical equipment for the clinic.

Shelter, the most basic of needs, is provided by McRest, the Macomb County Rotating Emergency Shelter Team. For the past 19 years, the homeless have found temporary refuge at McRest. In this year, 1,090 men, women and children spent the night at one of McRest's 84 participating churches. There were a total of 18,900 shelter nights, which are the number of people served times the number of nights they were guests. In addition to shelter, McRest conducts intake, assessment, case management, and referral services to help guide guests toward independence.

Turning Point treats victims of domestic violence and their children by providing programs and resources to enable them to regain control of their lives. The figures are startling. In 2007, Turning Point served

5,164 individuals. In the same year, their crisis line handled 14,400 calls. Support services continue after individuals leave the facility and a new emphasis has been placed on prevention. They also provide



prevention education in area schools. "We change the course of violence in many people's lives," states CEO, Suzanne Coats.

Turning Point has been operating out of a building erected in 1910. With the purchase of an adjacent building and renovation, they will be better equipped to provide services with dignity for the women and children.

Community Grants

Lapeer County's Sexual Assault Nurse Examiner/Sexual Assault Response Team (SANE/SART) was a new program designed to collect evidence and treat victims of sexual assault locally and quickly by a nurse with a patient advocate present. New equipment has already proven effective with one assailant admitting to the crime before legal action due to forensic evidence obtained. Another accused assailant was cleared by testing. Previously, victims had to travel out of the county to emergency rooms for treatment.



It's all about training when it comes to fire and rescue missions. The Almont Ash Sifters received funds for four computers that are making it possible for the team to "attend" current training classes online. These computers have become part of the training of 32 firefighters in updating them on the latest methods and technology to provide the area with the best firefighting services possible—and safety for themselves.

FCCF supported the Bruce-Romeo Fire Department with a grant to purchase a cardiac emergency response system. The department is now able to respond to the 12,000 residents in their area with a 12-lead EKG machine. This machine enables paramedics to conduct the EKG in the field and transmit that information immediately to the ER, saving valuable minutes. The advanced communication alerts an interventional cardiologist to head for the cath lab as the patient arrives. The new EKG system started saving lives the first month it was put in action.



Not forgetting seniors, FCCF awarded a grant to the Council on Aging to replace tables and chairs at the Capac Senior Center. The Romeo, Bruce and Washington Parks and Recreation Center received a grant to purchase exercise equipment for its impressive work-out facility.



The equipment is popular with senior citizens and helps to improve their cardio vascular and general fitness. As always, FCCF supported Henry Ford Macomb Health's flu immunizations.

Quality of care provided at end-of-life reflects the level of our compassion as a society. Support was provided for Henry Ford Hospice of Michigan and the Hospice of Michigan—Macomb County in-patient facilities. Too often hospice services are not credited enough for the services they provide.

Historic Renovations

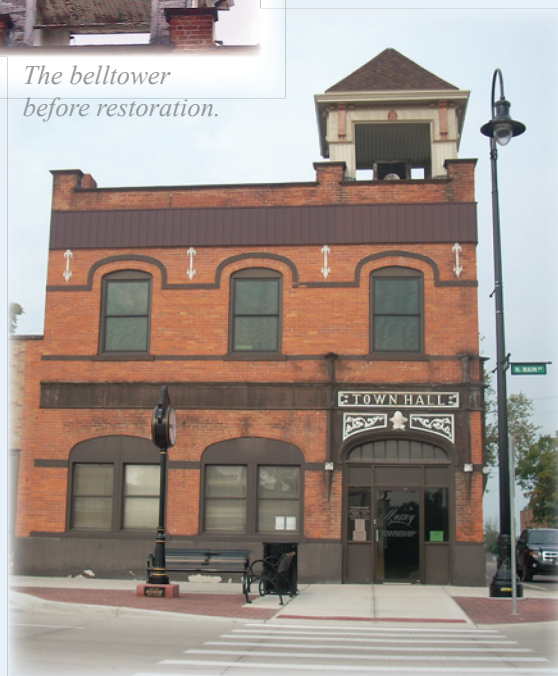
Our Foundation not only operates out of a historic house, which is listed on the State and National Register of Historic Places, it was created from the sale of the area's original Community Hospital.

Many local organizations are preserving history. The Imlay City Historical Commission worked on the restoration of its Historic Depot. The cracked, single-pane windows leaked and howled; FCCF provided funding for window replacements. Like many of our grantees, they continue to work hard at fundraisers to complete the restoration.

When Capac's Mussey Township Hall faced tearing down the bell tower or finding the funds for renovation, they appealed to FCCF. Mussey Township had already renovated the upstairs for offices, the downstairs for a meeting room and installed an elevator lift. Their continued efforts were effective and impressive. FCCF's funds helped to restore the bell tower so that the hall could remain in all of its original glory.



*The belltower
before restoration.*



The Mussey Township Hall

Mission Statement

Four County Community Foundation is committed to serving the current and emerging needs of our local community, continuing the tradition of philanthropy begun generations ago. The Foundation is dedicated to bringing together human and financial resources to support progressive ideas in education, health, community, youth and adult programs.

The Foundation provides a secure, flexible vehicle for individuals, families, foundations and organizations to positively impact the quality of life in our community. The Foundation recognizes that in order to meet its commitments to the community it serves it must seek growth through its permanent endowment funds from a wide range of donors.



Four County

community foundationSM

Four County Community Foundation

231 E. St. Clair, P.O. Box 539

Almont, MI 48003

Telephone: 810.798.0909 * Fax: 810.798.0908

Email: info@4ccf.org * Website: www.4ccf.org

